

FINISH LEGEND:

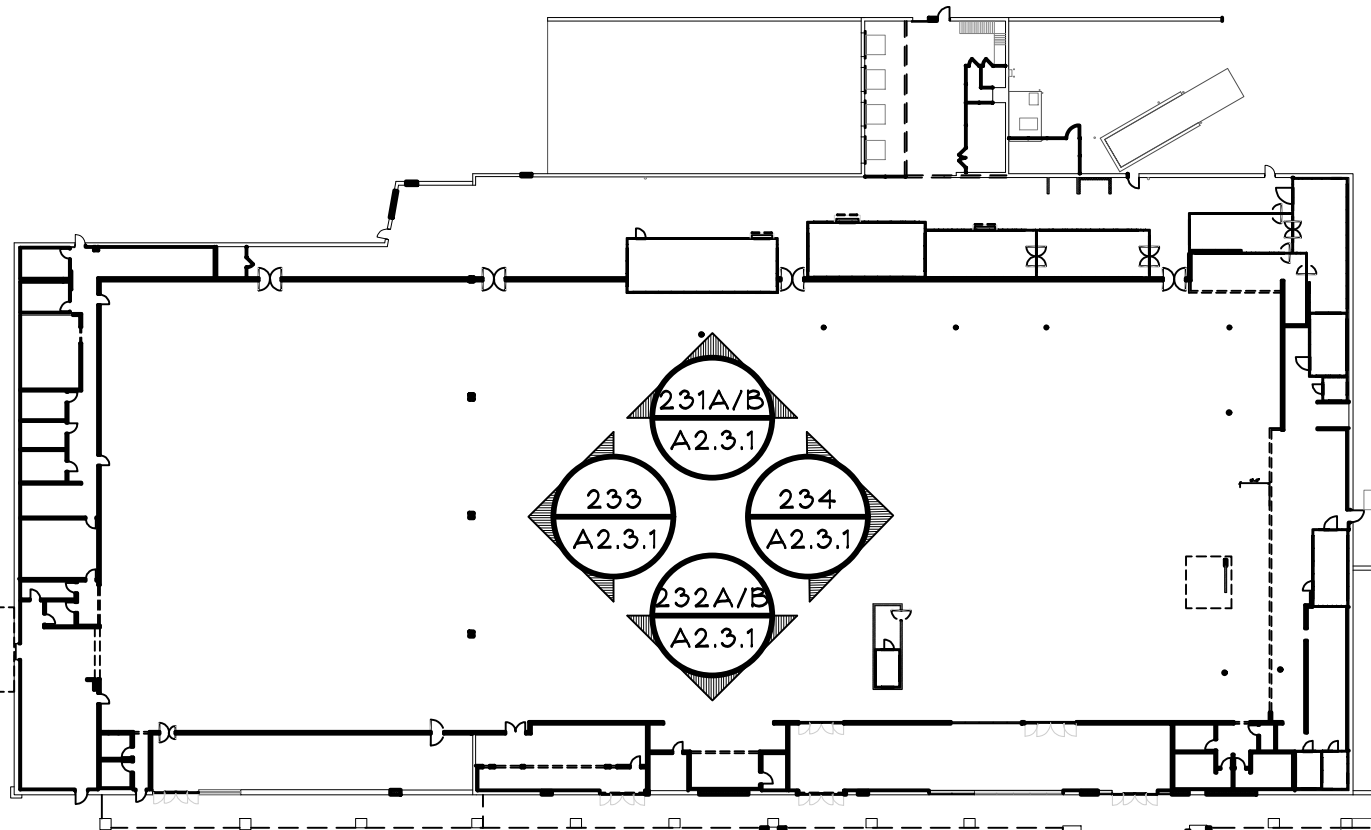
DECOR SERIES #400 (FRESH FOR EVERYONE DECOR)

SEE THE JSA CONSTRUCTION DRAWINGS AND PROJECT SPECIFICATIONS. SEE PROJECT SPECIFICATIONS SECTION 01 61 27 "DECOR INTERIOR FINISHES AND COLORS - FRESH FOR EVERYONE" FOR INFORMATION ON THE FINISHES AND DECOR. COORDINATE EXTENT OF FINISH AND DECOR WORK WITH DECOR DRAWINGS BY OTHERS AND THE KROGER PROJECT MANAGER.

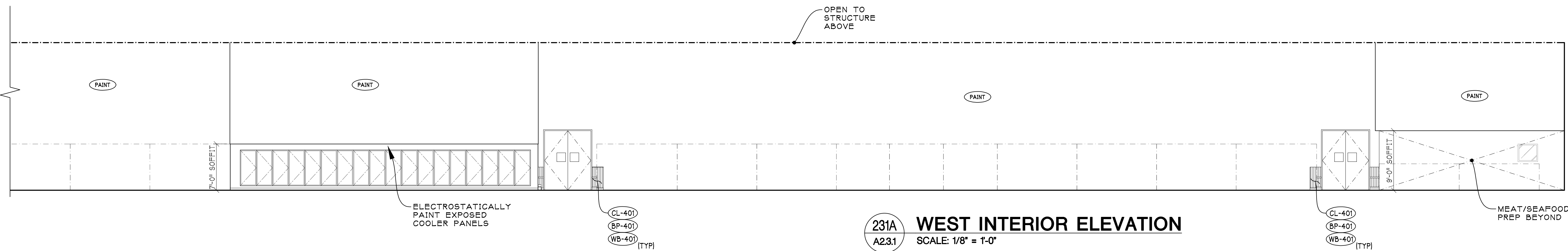
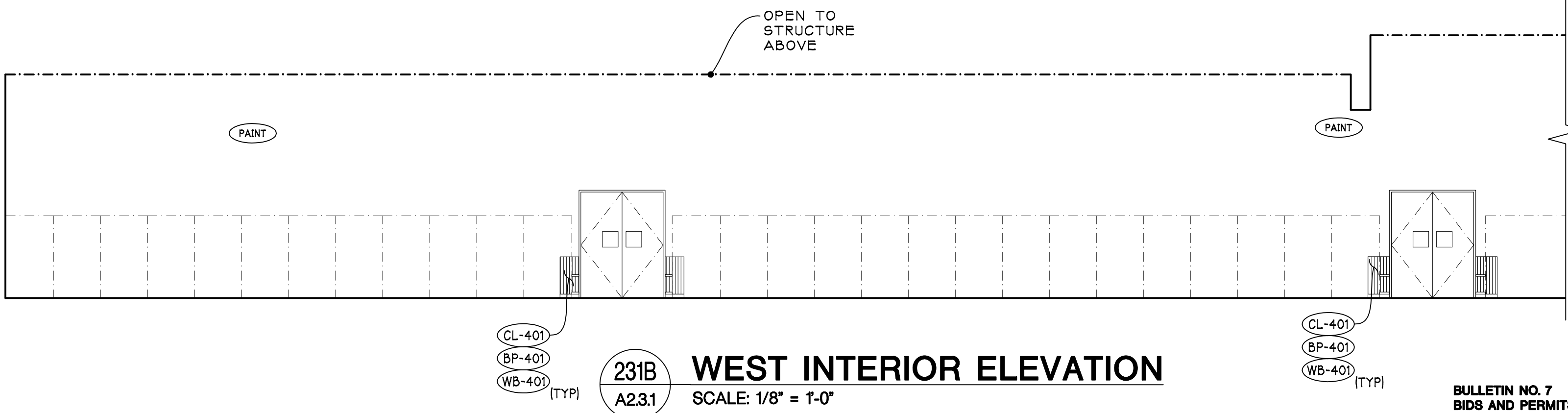
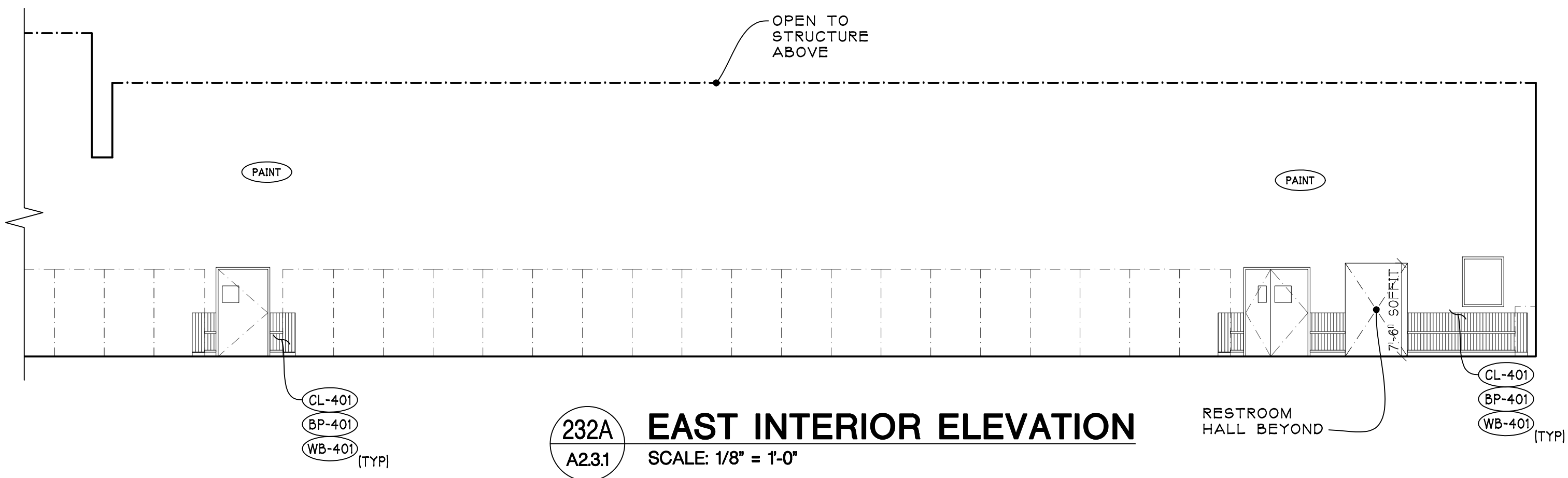
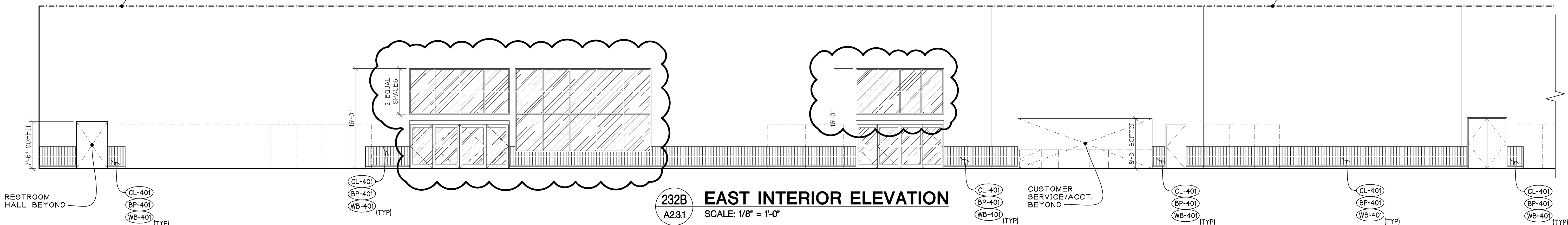
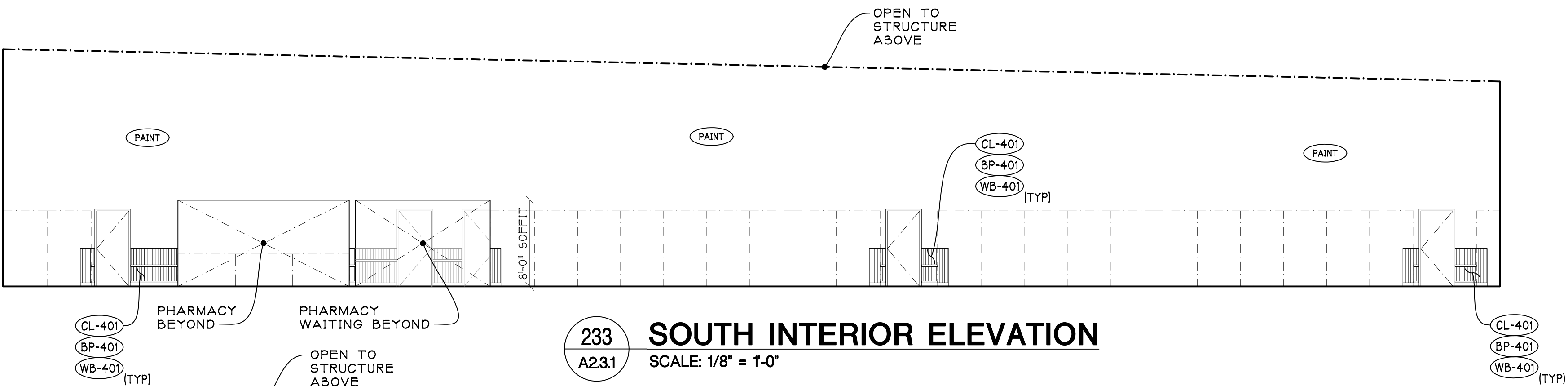
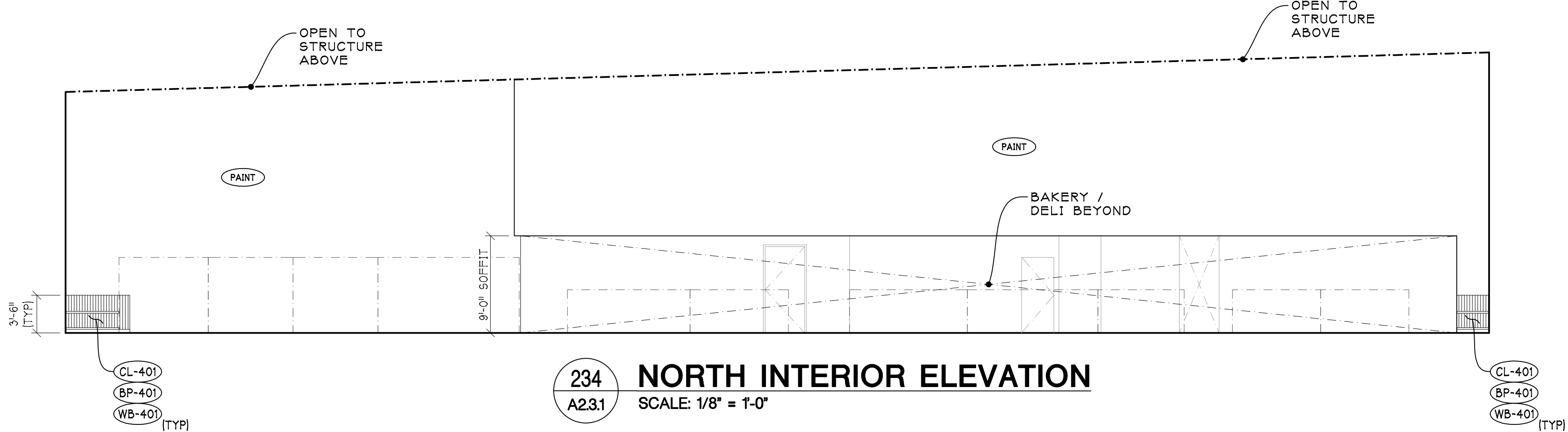
SEE DECOR DRAWINGS BY OTHERS FOR ELEVATION FINISHES & DECOR.

WALLS ABOVE WAINSCOT TO BE PAINTED COORDINATE WITH DECOR DRAWINGS BY OTHERS.

WALLS WITH WAINSCOT TO TYPICALLY RECEIVE TWO BUMPER RAILS CENTER OF BUMPER RAILS TO BE AT 5" AFF & 1'-11" AFF. THE CENTER OF BUMPER RAILS IN THE PHARMACY WAITING AREA TO BE 29" AFF.



KEY PLAN
NO SCALE



BULLETIN NO. 7
BIDS AND PERMITS
80% OWNER REVIEW
06/22/2026
02/11/2026
12/18/2024

PROPOSED NEW STORE
TAKEOVER FOR:

Kroger

STORE NO. D-416
15100 SILVER PARKWAY
FENTON, MI 48430

THE KROGER CO. OF MICHIGAN

jeffery a. scott architects p.c.

32316 grand river ave. suite 200
farmington, michigan 48336-3261
(248) 476-8800 fax (248) 476-8833

INTERIOR ELEVATIONS

project no. 24108 sheet no. A2.3.1

copyright © 2026